

Marine Integration Expert

Charles MURA, Consultant, MSc in Physics

Services

Providing an on-site high-level technical support for iXblue INS integration in your subsea vehicle, from an external third-party point of view.

Support on site:

- Short term
- Part time

PHINS:

- PHINS dedicated integration study
- Mechanical interfacing
- Configuration
- Tests



Phins C3 and PHINS

PHINS External sensors:

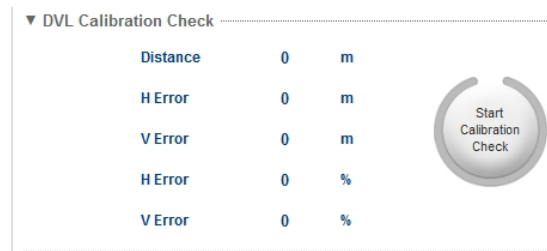
- External Sensors interfacing (DVL, GNSS, SVS, ...)
- Vehicle time synchronization
- Avoid sensors interferences



DVL, GNSS antenna and SVS

Support at sea:

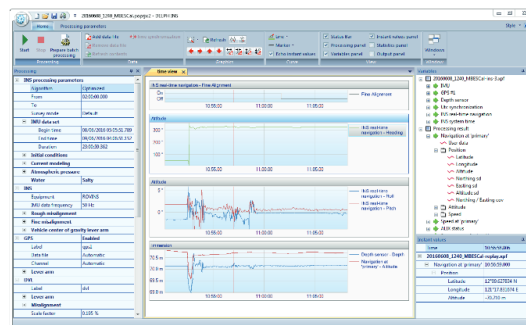
- PHINS/DVL Calibration:
 - Optimize vehicle deployment method with your operation constraint for maximum performance



PHINS DVL Calibration check

Remote support and reporting:

- Data Analysis
- Procedure delivery
- Video call



ixblue post processing software

Background

Based on 15 years of experience in the marine industry (Offshore hydrography surveyor, AUV R&D System Architect, CTO), I am a technical consultant in the following fields:

- Marine and Subsea System Design
- Surface and Subsea Positioning (GNSS, Inertial Navigation System, DVL)
- Underwater Acoustic Sensors

Contact & Quotation Request

Charles MURA

Email: cmura@m-seaconsulting.com

Mobile: +33 6 66 48 95 40

Available on request with 2 weeks' notice. Shorter delay to be discussed.